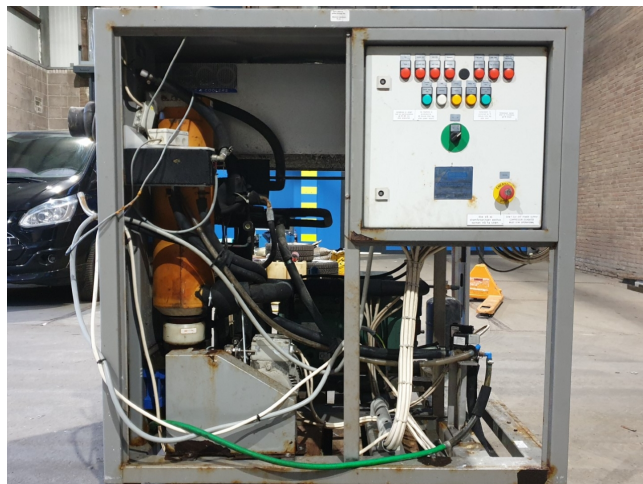


Ziegra UBE 1500

Specifications

La marque	Ziegra
Le type	UBE 1500
Capacité	1.500 kg/24h
Réfrigérant	R404A
Tailles	1310x1310x1380 mm (LxWxH)
Remarques	Y.o.b. 2007
Stock	1



Description

Used Ziegra UBE 1500

Used Ziegra UBE 1500 flake ice machine unit on R404A that makes up to 1.500 kg/24h. Complete with 1 Bitzer 4NCS-12.2Y semi-hermetic reciprocating compressor, condenser with 1 Ziehl-Abegg fan - 50 Hz - 0,78 kW - 1250 RPM - diameter 500 mm, Klimal FM 5.6(M16/R1) liquid receiver with a volume of 5,6 liter, oil separator, suction accumulator, liquid line filter drier and a control box.

*Why choose for HOSBV? Were not only the largest used refrigeration specialist in Europe, but also, we deliver all equipment including an extensive test, warranty and industrial cleaning. *If requested we are happy to arrange your logistics.





